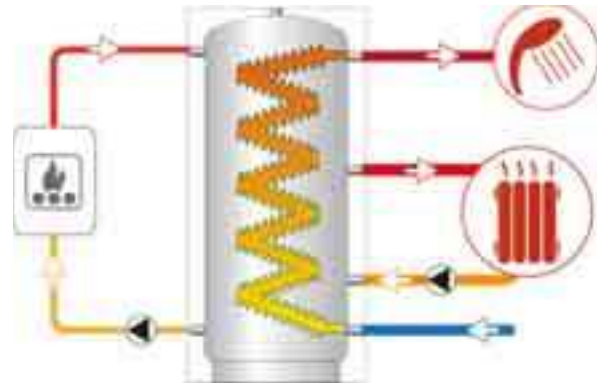


ECO-COMBI 1

MULTI-HEAT ENERGY BUFFER WITH 316L STAINLESS STEEL D.H.W. CORRUGATED PIPE



STORAGE		CORRUGATED DHW STAINLESS STEEL PIPE
Pmax	Tmax	Pmax
3 bar	99 °C	6 bar



APPLICATION

Heating hot water storage and rapid D.H.W. production. Used to improve flexibility of pellets, stoves and burners.

MATERIAL

- **BUFFER TANK:** made in mild steel outside painted. There is no need of any anti-corrosion treatment due to the fact that the buffer is in a closed circuit without any adding air.
- **D.H.W. PRODUCTION:** 316L stainless steel corrugated pipe, suitable drinkable water according to D. M. n. 174 dated 06.04.04

TECHNICAL DESCRIPTIONS

Multi-Heat Energy tanks Combi1 are used in units with a typically discontinuous energy source for double use: heating system and sanitary hot water system.

Eco Combi 1 can be used in

- Heating system with a biomass generator as energy source, combining the possibility to produce hot

water for sanitary use. In such case, storage heating volume allows the generator to regularly work, limiting number of stops due to the inadequate energy request of the heating system. Moreover, it limits the emission of smoke and the creation of corrosive condensate (smokes side).

- Sanitary hot water production systems for domestic and sanitary use where heating water is stored. In this system, the high potentiality of the Eco Combi allows to obtain a good production of hot sanitary water even if temperatures of the primary system are not so high (i.e using heating pumps as primary source and solar source as support)

The particular shape of the corrugated pipe is avoiding any problem relating to the storage of sanitary hot water (less, stagnation, bacterium etc) and ensure high heating exchange performances.

INSULATION

NOFIRE® 100 mm soft polyester fibre 100% made of recyclable material, with high Thermal insulation and Thermal conductivity: **0.035 W/mK**. Fire resistance class **B-s2d0** according to **EN 13501**. Grey PVC external lining complete with top cover.

WARRANTY

- Buffer tank 2 years
 - 316L stainless steel corrugated pipe for D.H.W. production: 5 years
- See general sales conditions and warranty.



PROMPT DELIVERY
(1-5 days to dispatch-delivery time excluded)



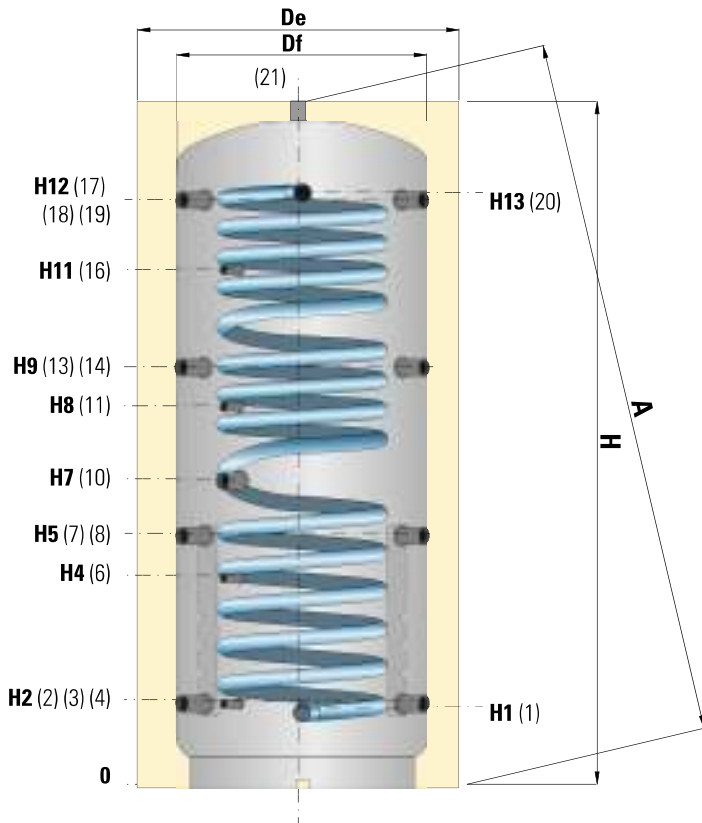
ECO COMBI 1 VC

Capacity	D.H.W. production: 316L STAINLESS STEEL Storage: mild steel
[liters]	Art. Nr.
500	3270162286051
600	3270162286001
800	3270162286002
1000	3270162286003
1250	3270162286004
1500	3270162286005
2000	3270162286006

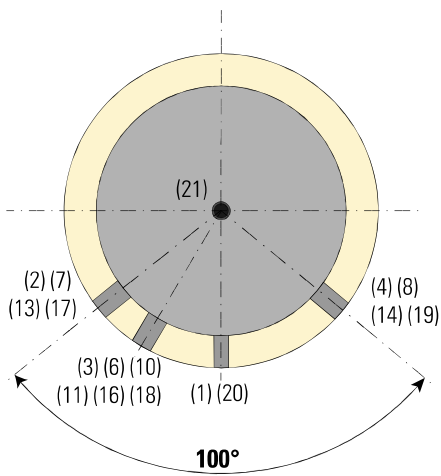
316L stainless steel corrugated pipe for D.H.W. production	
D.H.W. circuit volume	D.H.W. circuit surface
[liters]	[m ²]
26,6	4,5
31,0	5,3
33,4	5,8
45,5	7,8
45,5	7,8
55,3	9,5
72,2	12,3

ECO-COMBI 1

MULTI-HEAT ENERGY BUFFER WITH 316L STAINLESS STEEL D.H.W. CORRUGATED PIPE



CONNECTIONS	
1	Domestic cold water circuit inlet 1" Gas M
2 - 4	Heating return/To Generator 1"1/2 Gas F
3	Connection for instrumentation 1/2" Gas F
6	Connection for instrumentation 1/2" Gas F
7 - 8	Heating return/To Generator 1"1/2 Gas F
10	Electrical immersion resistance 1" 1/2 Gas F
11	Connection for instrumentation 1/2" Gas F
13 - 14	Heating return/To additional generator/Heating delivery 1"1/2 Gas F
16	Connection for instrumentation 1/2" Gas F
17 - 19 21	From Generator/ Heating delivery 1"1/2 Gas F
18	Connection for instrumentation 1/2" Gas F
20	Domestic hot water outlet 1" Gas M



Capacity	Net Volume	Df	De	H	A	H1	H2	H4	H5	H7	H9	H11	H12	H13
[liters]	[liters]	[mm]												
500	421	650	850	1670	1695	230	247	533	629	841	1011	1231	1343	1360
600	503	650	850	1920	1945	230	247	582	695	915	1144	1382	1593	1610
800	738	790	990	1890	1925	248	265	584	690	823	1115	1332	1541	1558
1000	855	790	990	2180	2210	248	265	656	787	998	1309	1588	1831	1843
1250	1131	900	1100	2252	2292	296	313	705	835	986	1357	1586	1879	1896
1500	1324	950	1150	2300	2345	296	313	736	845	1061	1377	1653	1909	1921
2000	1829	1100	1300	2370	2430	330	347	770	879	1060	1411	1687	1943	1955

BUFFER TANKS